

# State of Wyoming Corner Record

(In compliance with the CORNER PERPETUATION AND FILING ACT, Wyoming Statutes, 2013 Section 33-29-901 through 33-29-910, and the Rules and Regulations of the Board of Professional Engineers and Professional Land Surveyors)

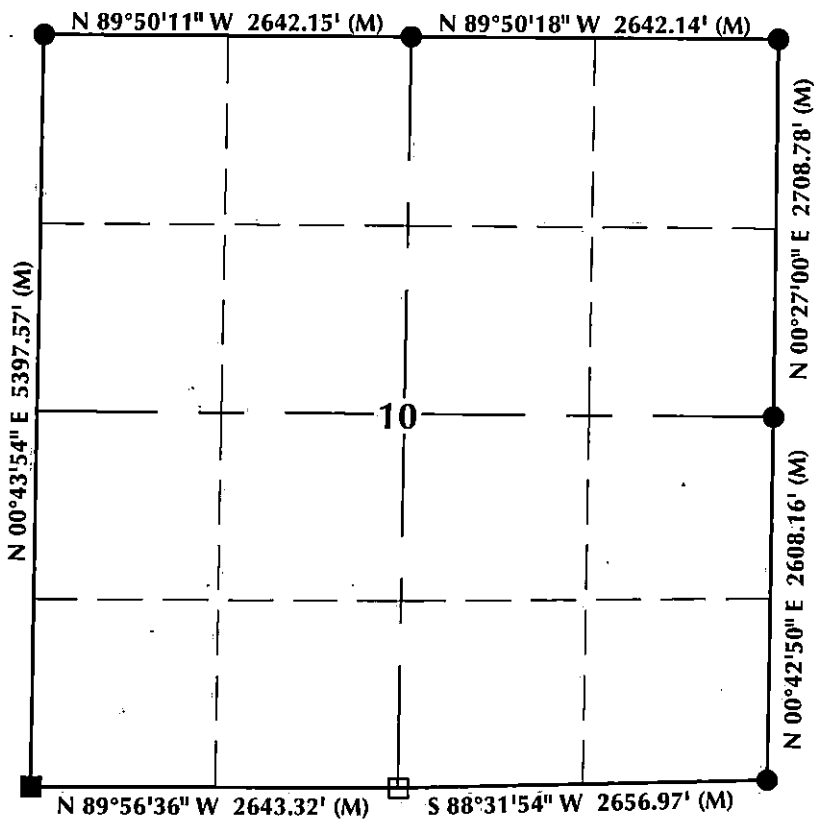
Reverse side of this form may be used if more space is needed.

Record of original survey and citation of source of historical information (if corner is lost or obliterated). Description of corner monumentation evidence found and/or monument and accessories established to perpetuate the location of this corner. Sketch of relative location of monument, accessories, and reference points with course and distance to adjacent corner(s) (if determined in this survey). Method and rationale for reestablishment of lost or obliterated corner.

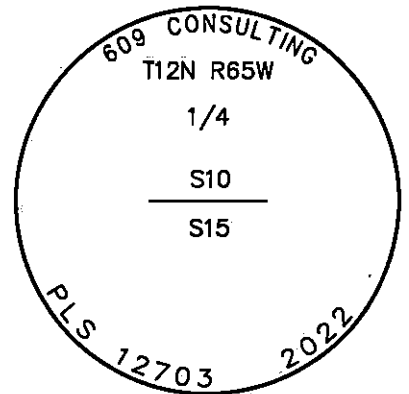
**FOUND:** Stone, loosely set, projecting 5" above the surface of the ground, approximately 20.3' North of a fenceline extending East and West.

**SET:** Accepted the stone as the true corner position and set a 2 1/2" aluminum cap, stamped PLS 12703, on a #5 rebar, 8" above the surface of the ground, N 37' 14" 33" W, 0.3', as an accessory.

## Monument Location



## Monument Inscription



**NOTES:**

1. ▲ INDICATES FOUND BRASS CAP
2. ● INDICATES FOUND ALUMINUM CAP
3. ◆ INDICATES SET ALUMINUM CAP
4. ■ INDICATES FOUND STONE
5. □ INDICATES SECTION CORNER PER CORNER RECORD
6. BASIS OF BEARING DERIVED FROM WYOMING COORDINATE SYSTEM NAD83 EAST ZONE
7. ALL MEASURED DISTANCES ARE GRID
8. DRAWING NOT TO SCALE

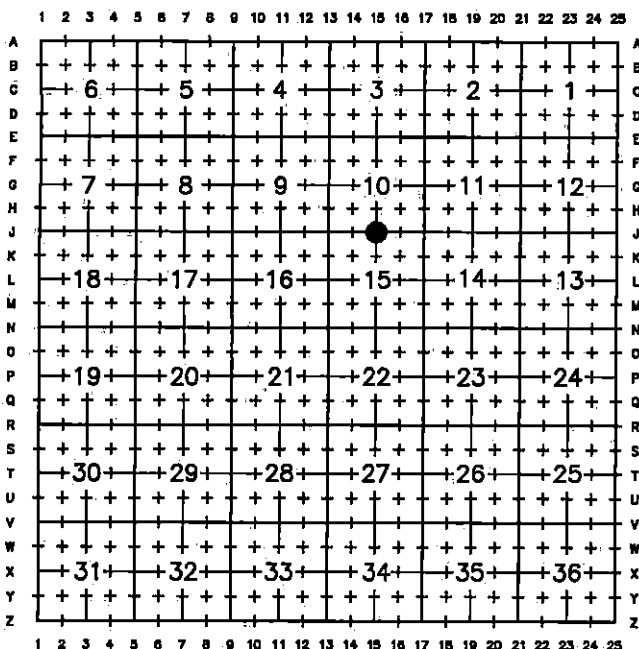


Date of Field Work: 2/14/2022

Office Reference: 22-10

K:\ANADARKO\SURVEY BASE MAP\WY83-ECORNER RECORDS\T12N\_R65W\DRAWN CORNERS\15\_12N65W.dwg, 5/5/2022 3:02:24 PM, randy

## Cross Index Plat



This corner record was prepared by me or under my direction and supervision.

609 Consulting, LLC  
1095 Saberton Avenue  
Sheridan, WY 82801  
 Telephone Number: 307-674-0609



RANDALL K. FRENCH  
 PROFESSIONAL LAND SURVEYOR  
 WYOMING REGISTRATION NUMBER 12703

RECP #: 837726  
 RECORDED 5/24/2022 AT 1:04 PM BK# 2789 PG# 1502  
 Debra K. Lee, CLERK OF LARAMIE COUNTY, WY PAGE 1 OF 1

Corner Name: South 1/4 Section 10, T12N, R65W, 6th P.M. County: Laramie, Wyoming

WBPEPLS/PLSW: March 1994; PLSW January 1998, January 2019

Cross-Index No.: J-15